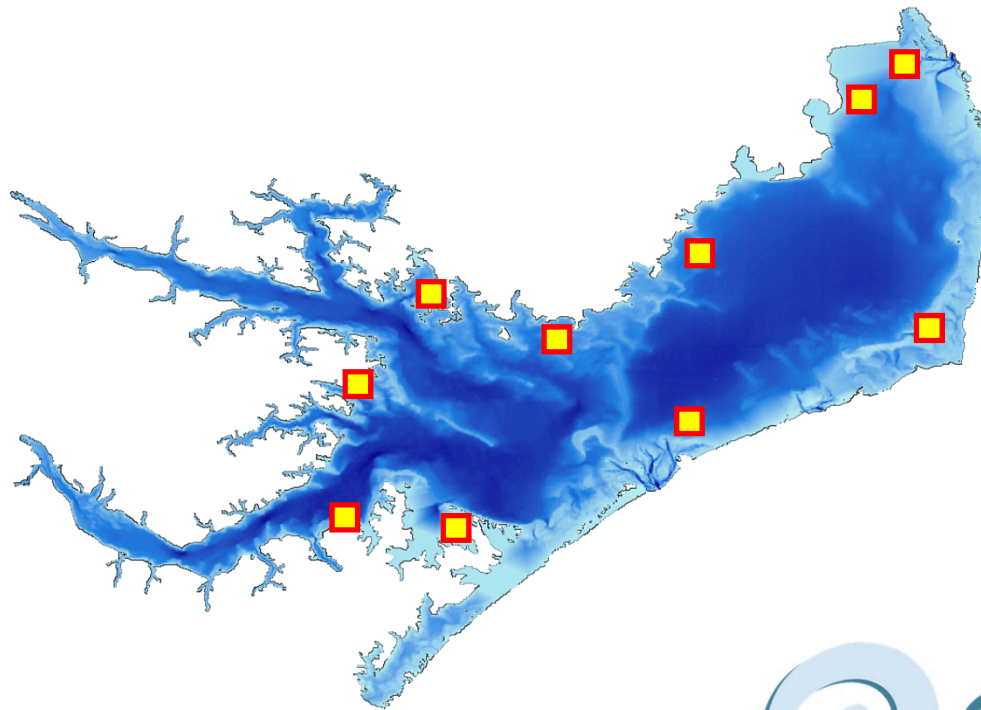


OYSTER SANCTUARIES

setting goals and scaling-up



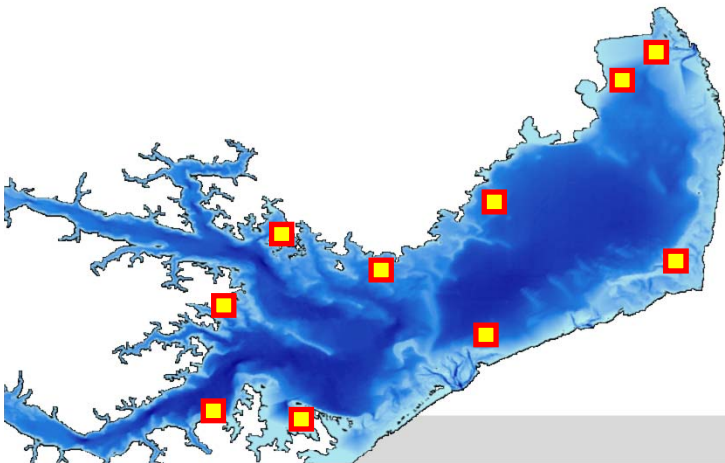
Brandon Puckett
David Eggleston



...establish oyster sanctuaries to

PROTECT broodstock

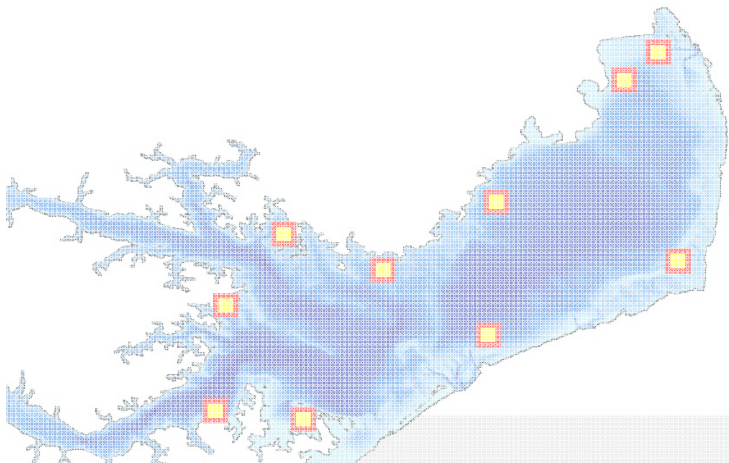
SUBSIDIZE harvested reefs



...establish oyster sanctuaries to

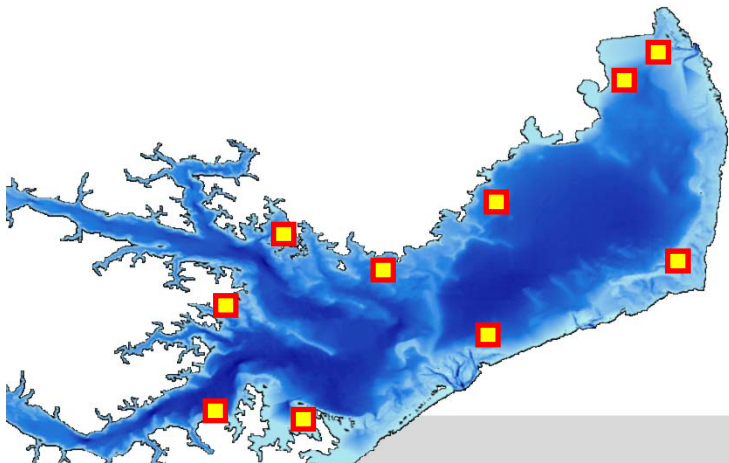
PROTECT broodstock

How much is enough?



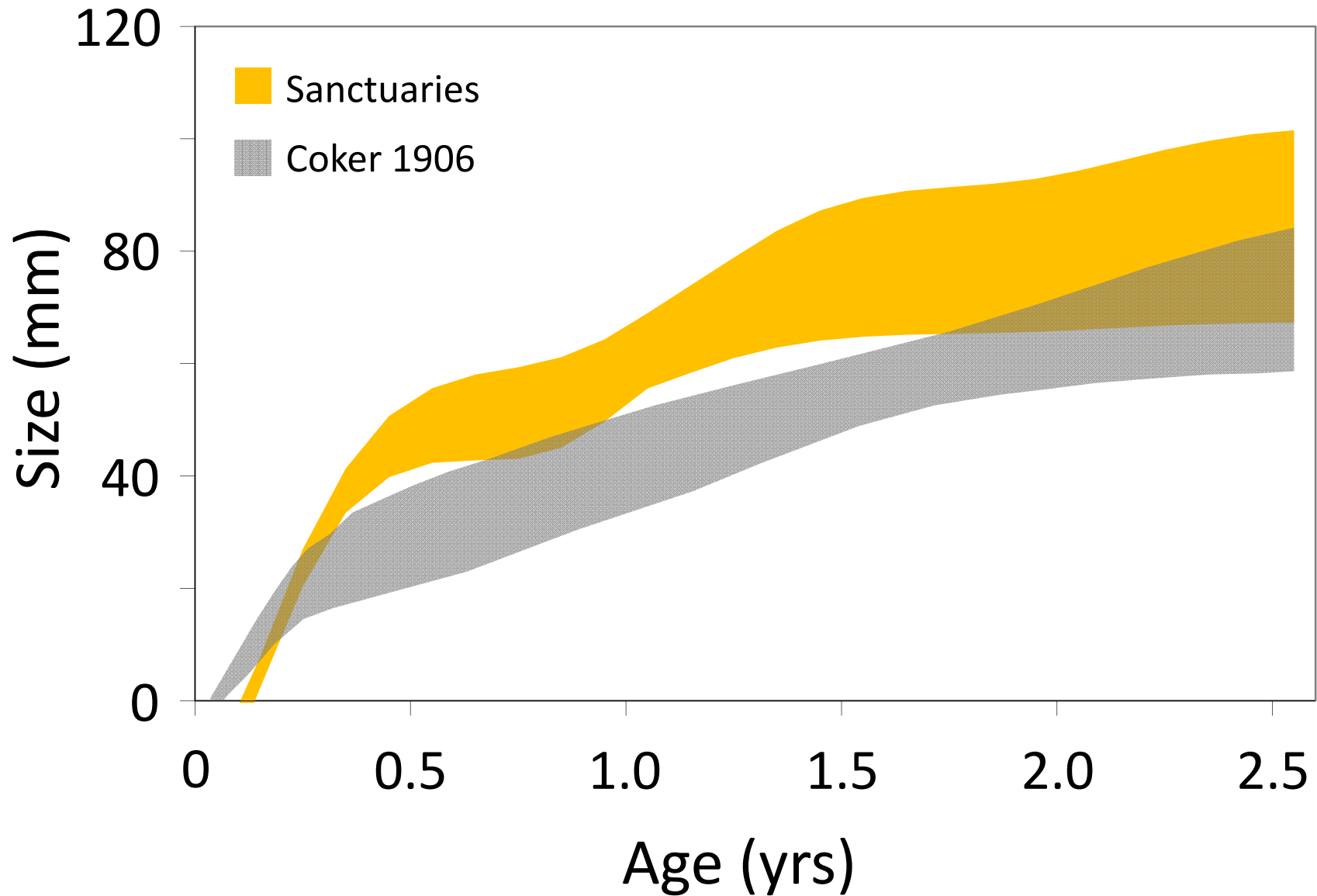
...establish oyster sanctuaries to

FUNCTIONAL equivalence

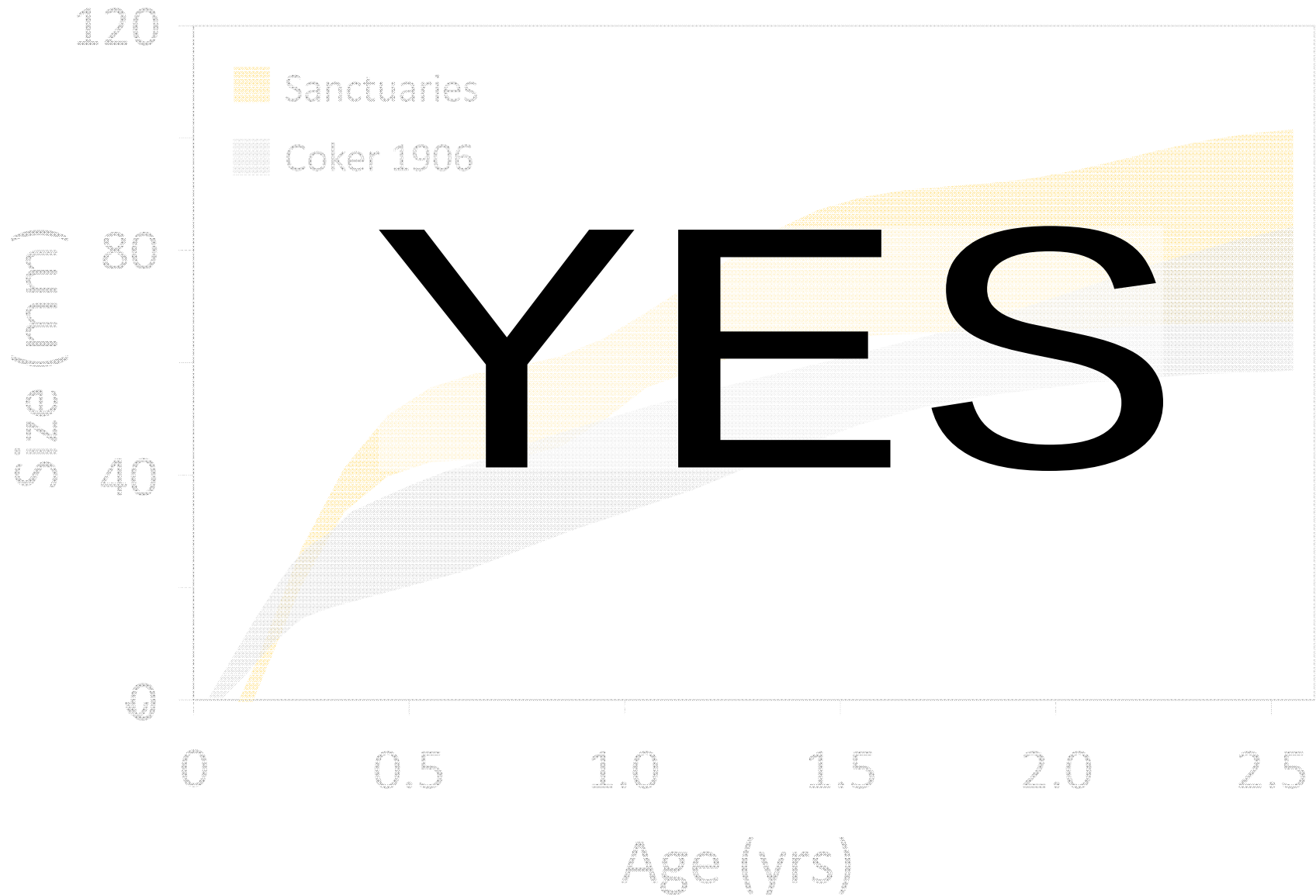


FUNCTIONALLY equivalent demographics?

FUNCTIONALLY equivalent demographics?



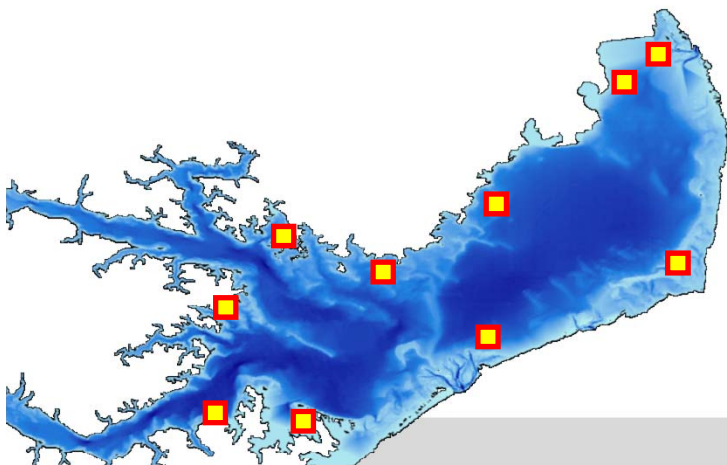
FUNCTIONALLY equivalent demographics?



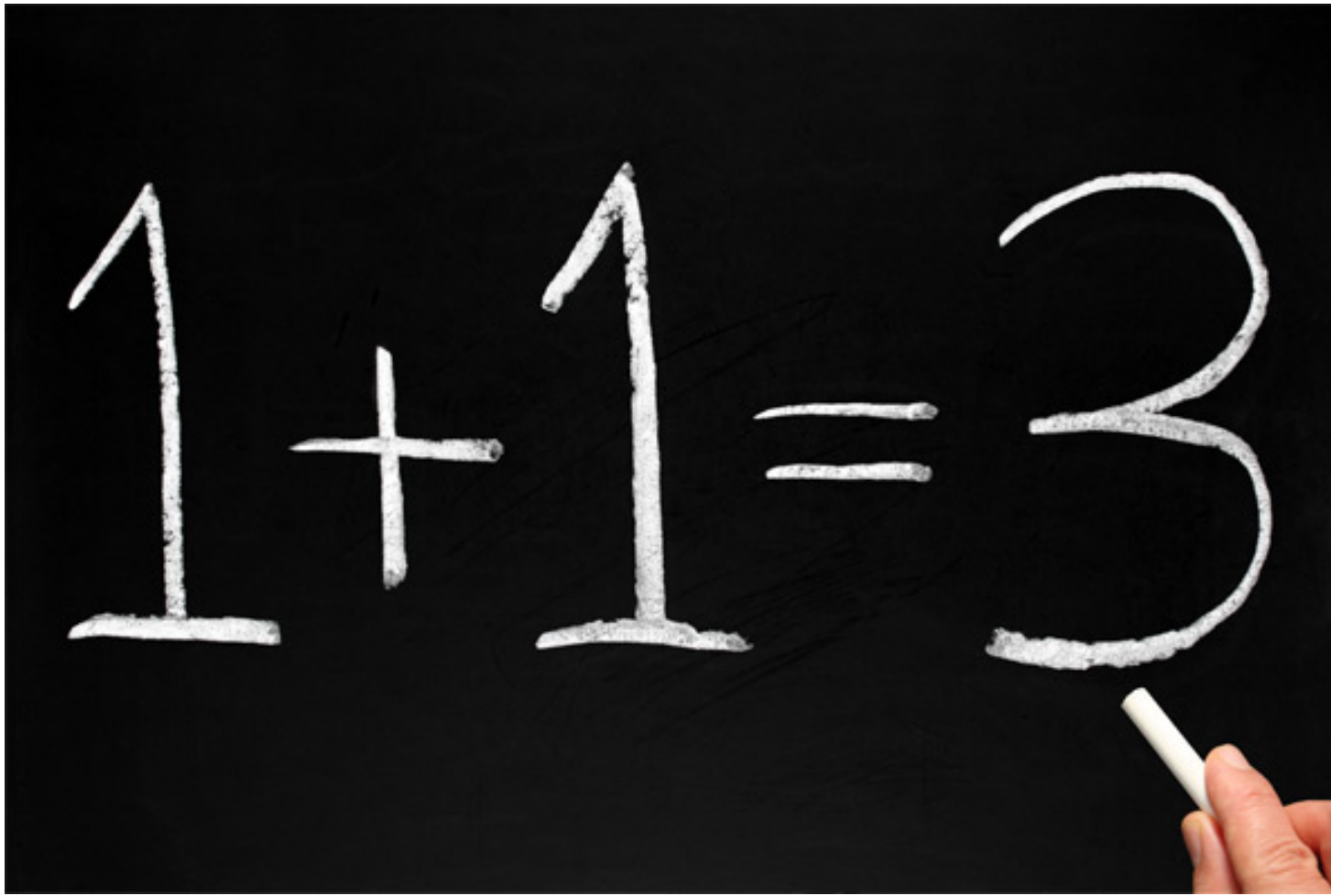
...establish oyster sanctuaries to

FUNCTIONAL equivalence

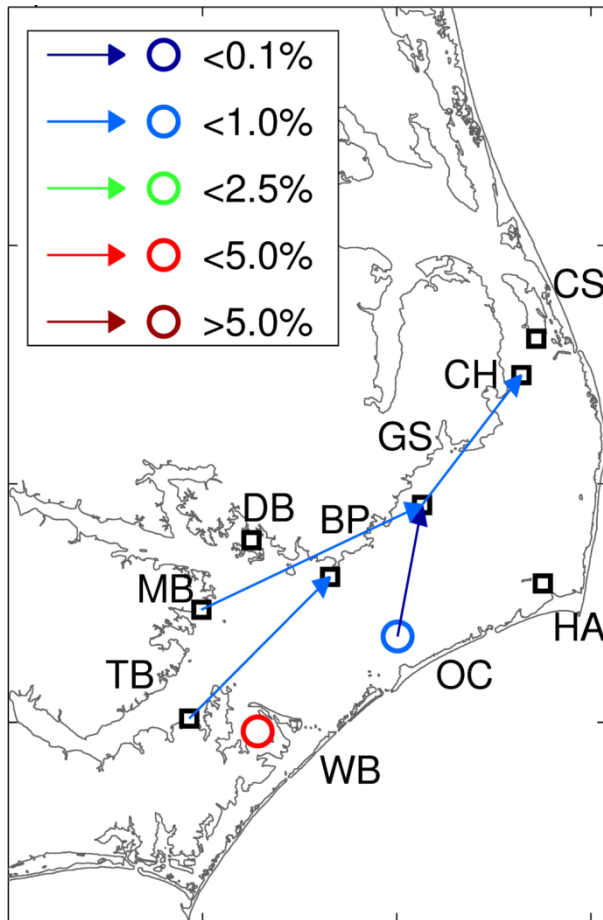
SUSTAINABLE network



why **SUSTAINABLE** network?



SUSTAINABLE network?

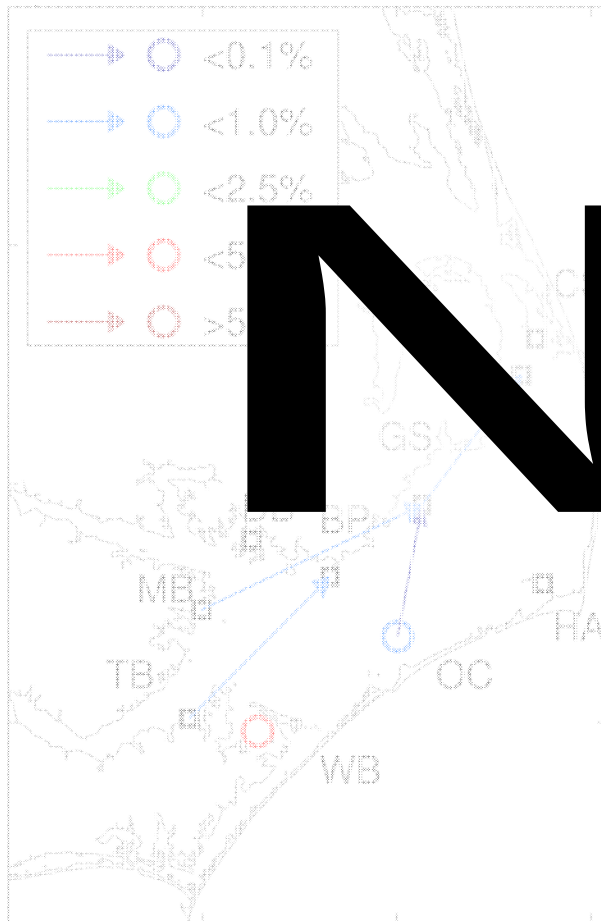


=



Limited or no connectivity

SUSTAINABLE network?



N

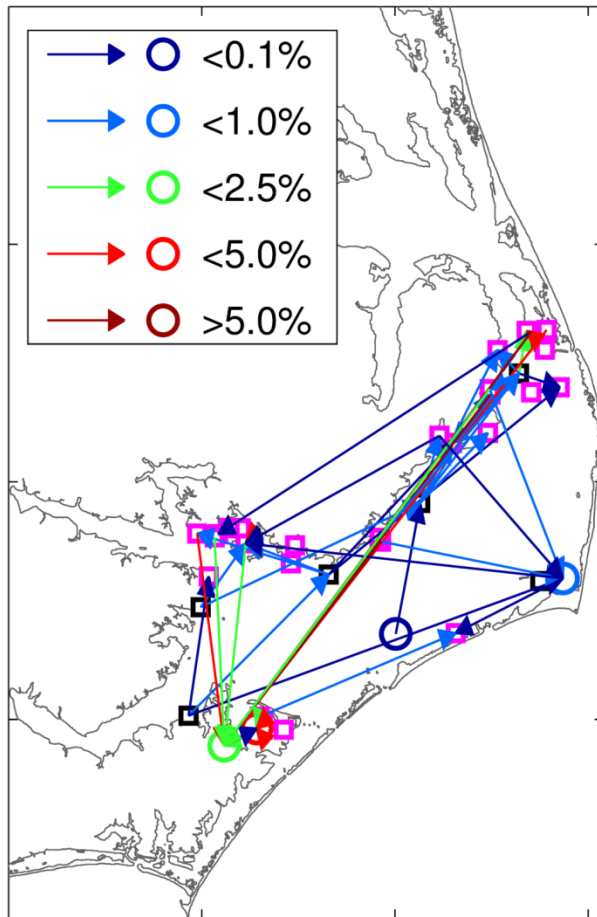
O

Limited or no connectivity

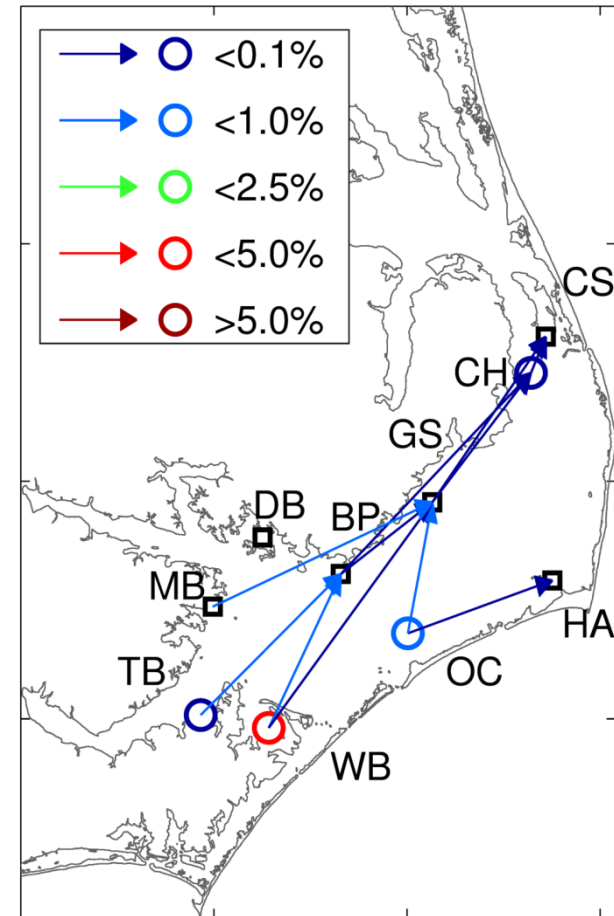
SUSTAINABLE

network design?

Incr. #

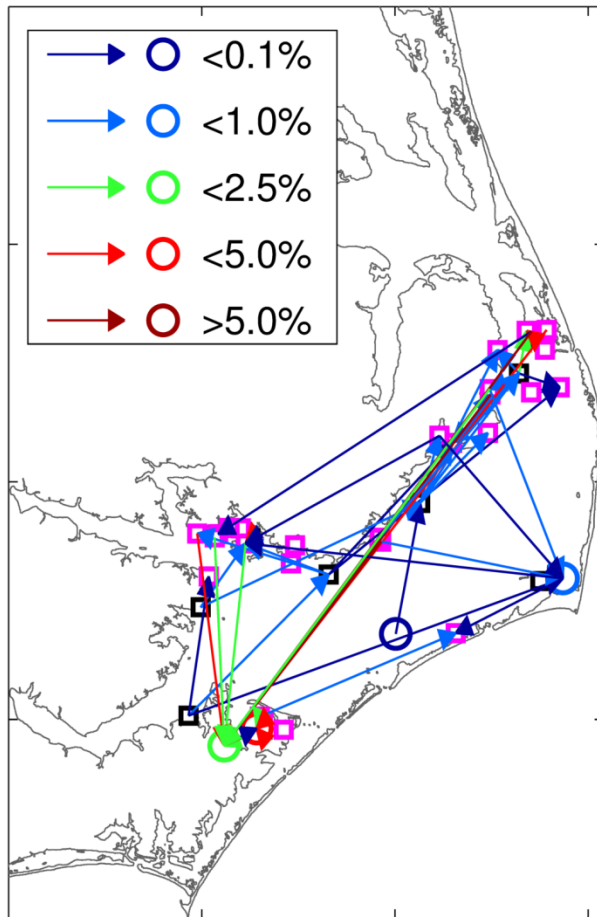


Incr. size

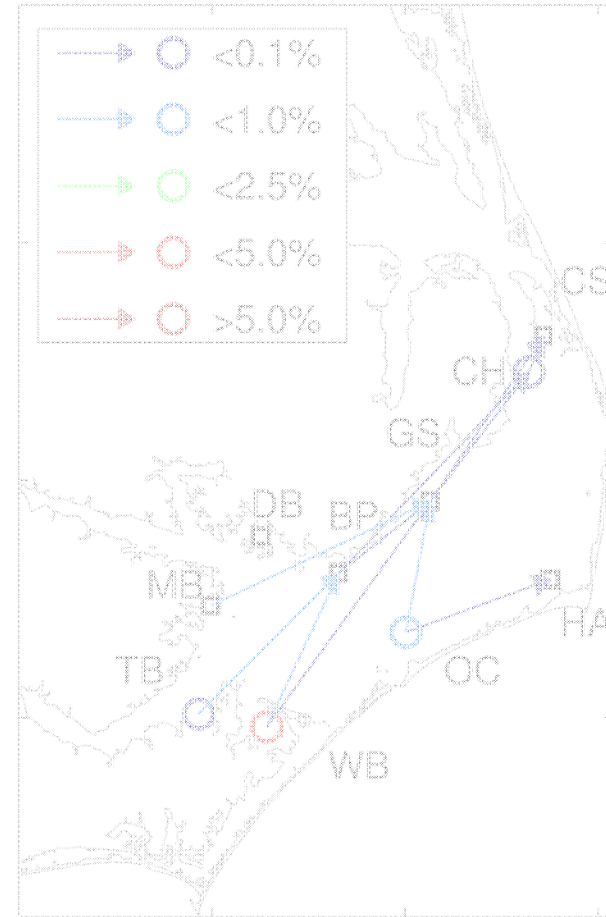


SUSTAINABLE network design?

Incr. #

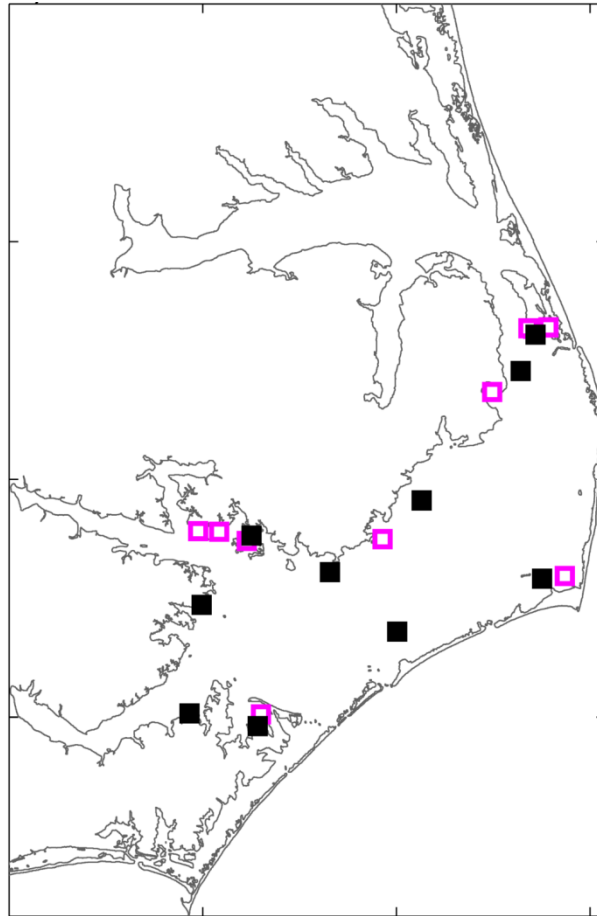


Incr. size



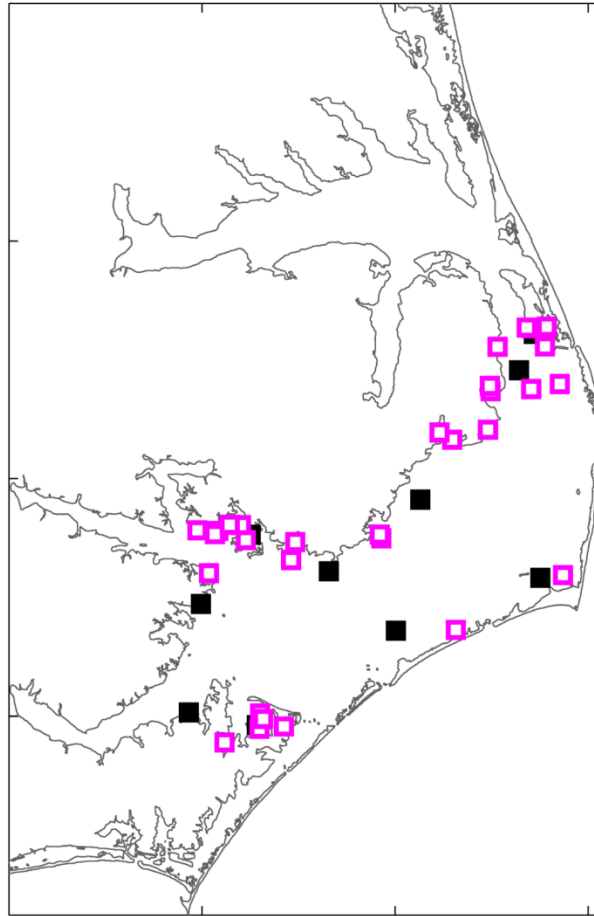
SUSTAINABLE network design?

20 sanctuaries



SUSTAINABLE network design?

40 sanctuaries

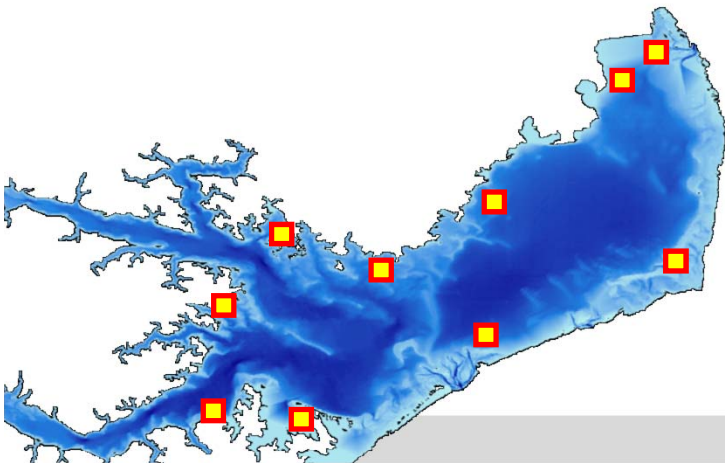


...establish oyster sanctuaries to

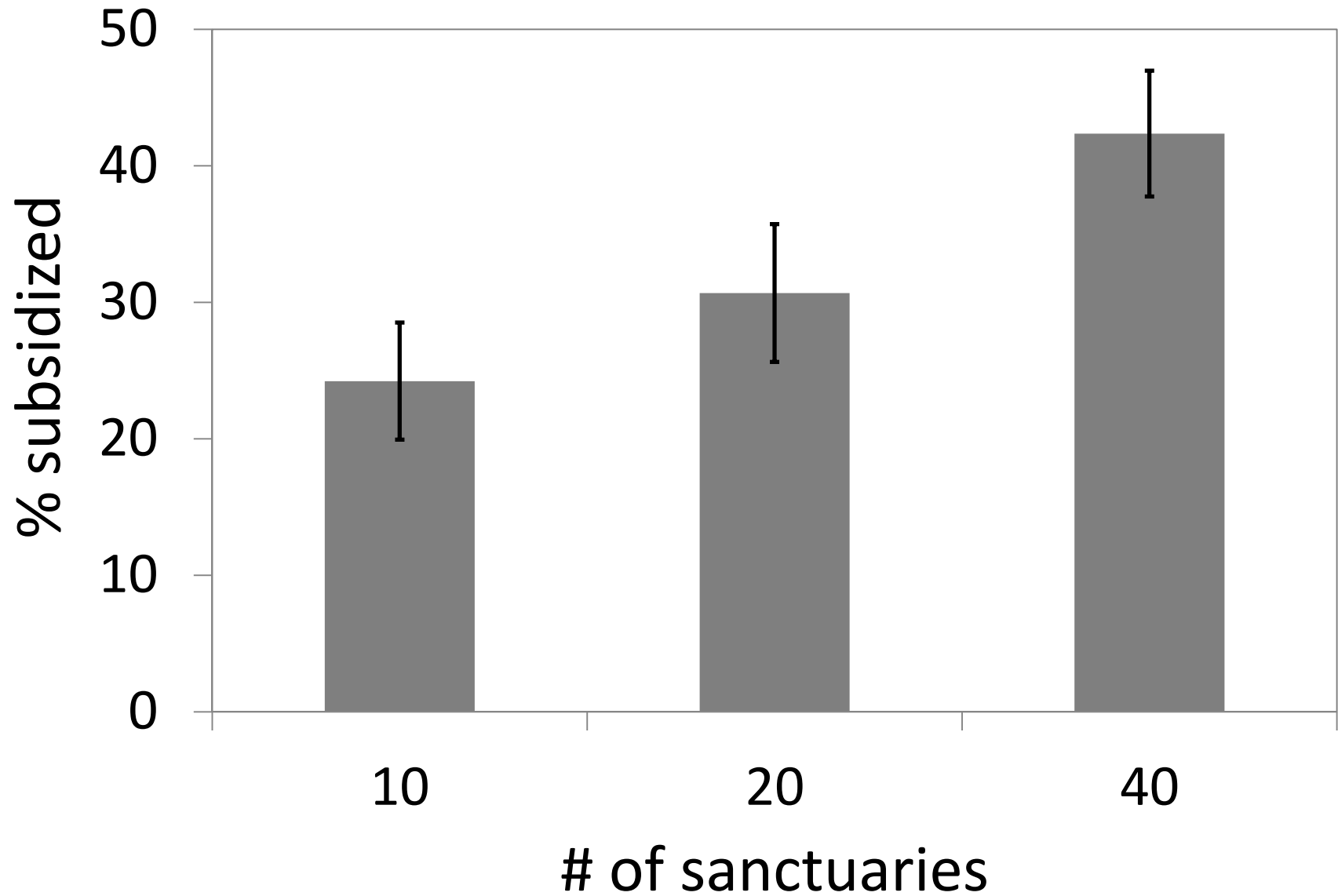
FUNCTIONAL equivalence

SUSTAINABLE network

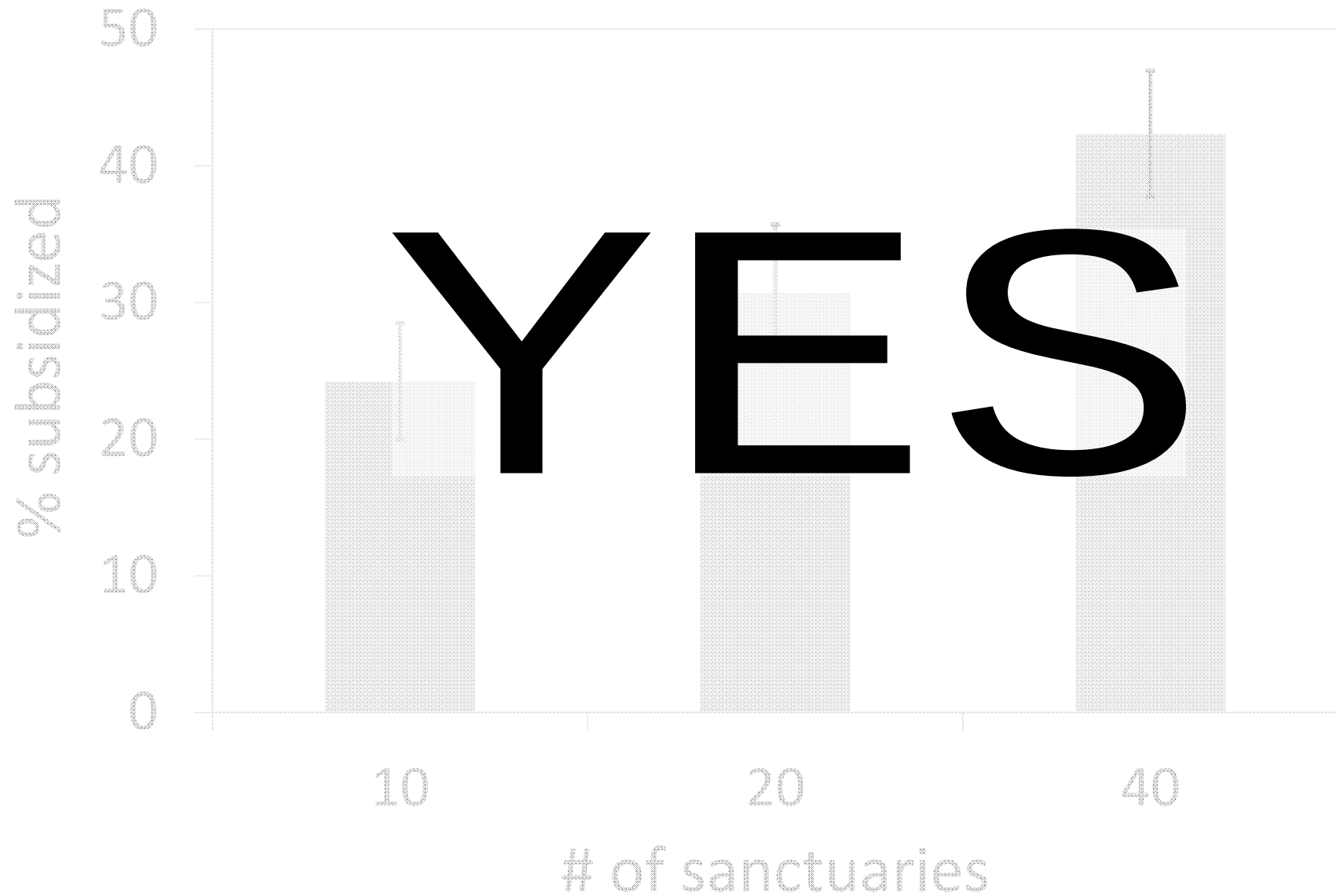
SUBSIDIZE harvested reefs



SUSTAINABLE while SUBSIDIZE reefs?



SUSTAINABLE while SUBSIDIZE reefs?



conclusions

ANSWER how much
is enough?

SCALE-UP reef to
population

INTEGRATE restoration
strategies

acknowledgements



National Shellfisheries Association

