

Monitoring Restoration, Research, and Enhancement Efforts

Troy Alphin and Martin Posey
UNC Wilmington

Monitoring Oyster Restoration

- What are the goals and target of the restoration?
 - Assessment of development trajectories for created reefs (loose shell and bagged reefs)?
 - Interactive influence of oyster mediated settlement and retention?



Monitoring cont'd

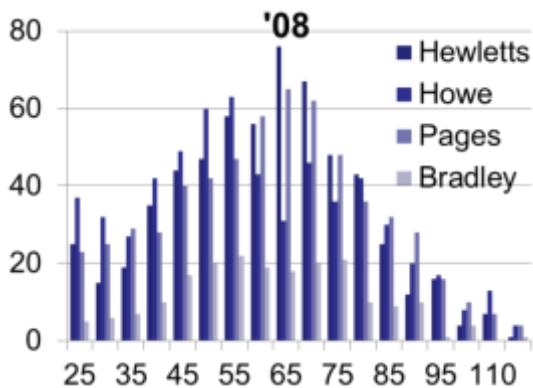
- Assessment of landscape factors that may govern reef development and ultimate function.?
- Identification of community development benchmarks of oyster utilization?
- Partitioning of ecosystem services?



What are we Targeting?



- Reef metrics?
 - Density
 - coverage
- Health indices
 - Condition
 - Sex ratios
- Associated fauna
- Nekton utilization



Development



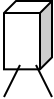
- Time and spatial scales
- What is the target development criteria
 - Oyster density

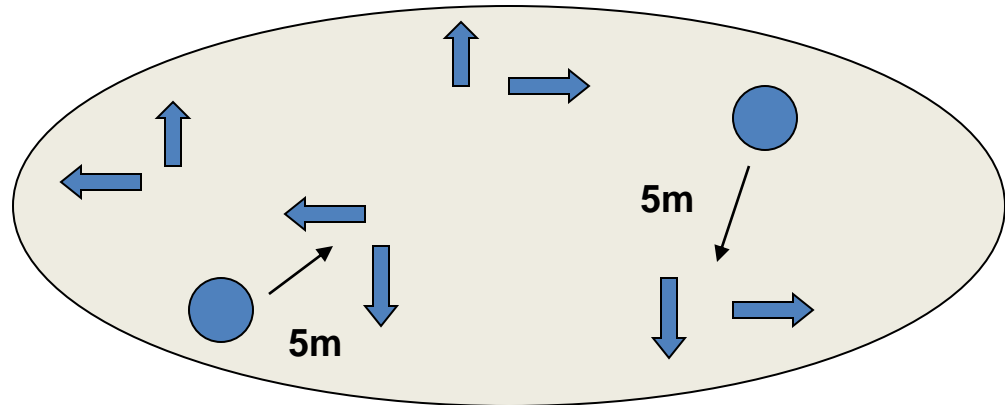


Reef utilization

- Associated fauna
- Nekton
 - Passive vs active
- Breder traps, Surround seines and observations
- video



↑ = Breder trap 
● = Seine net area





1 Min.



2 Min.



4 Min



9 Min



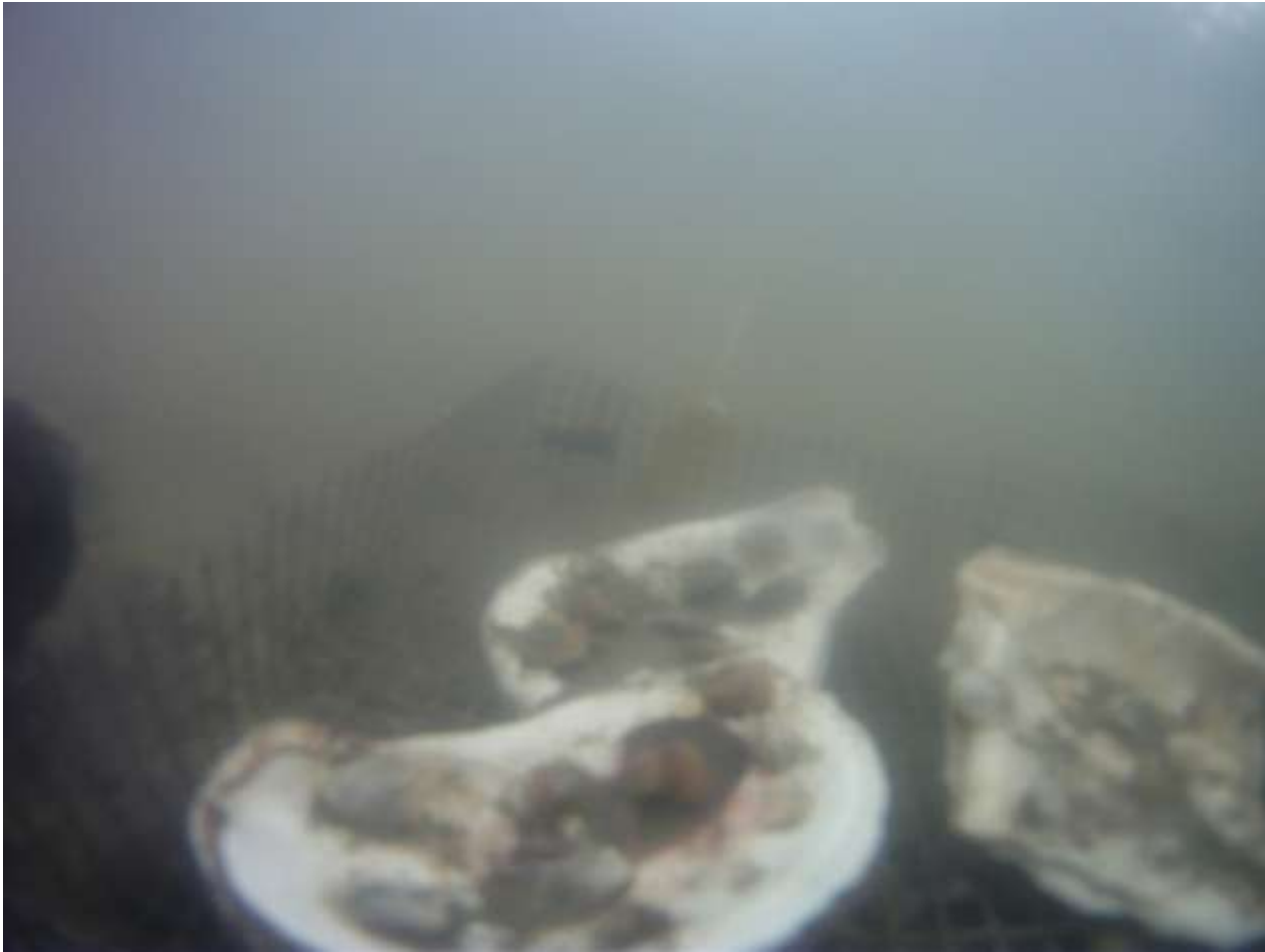
12 Min



19 Min



20 Min



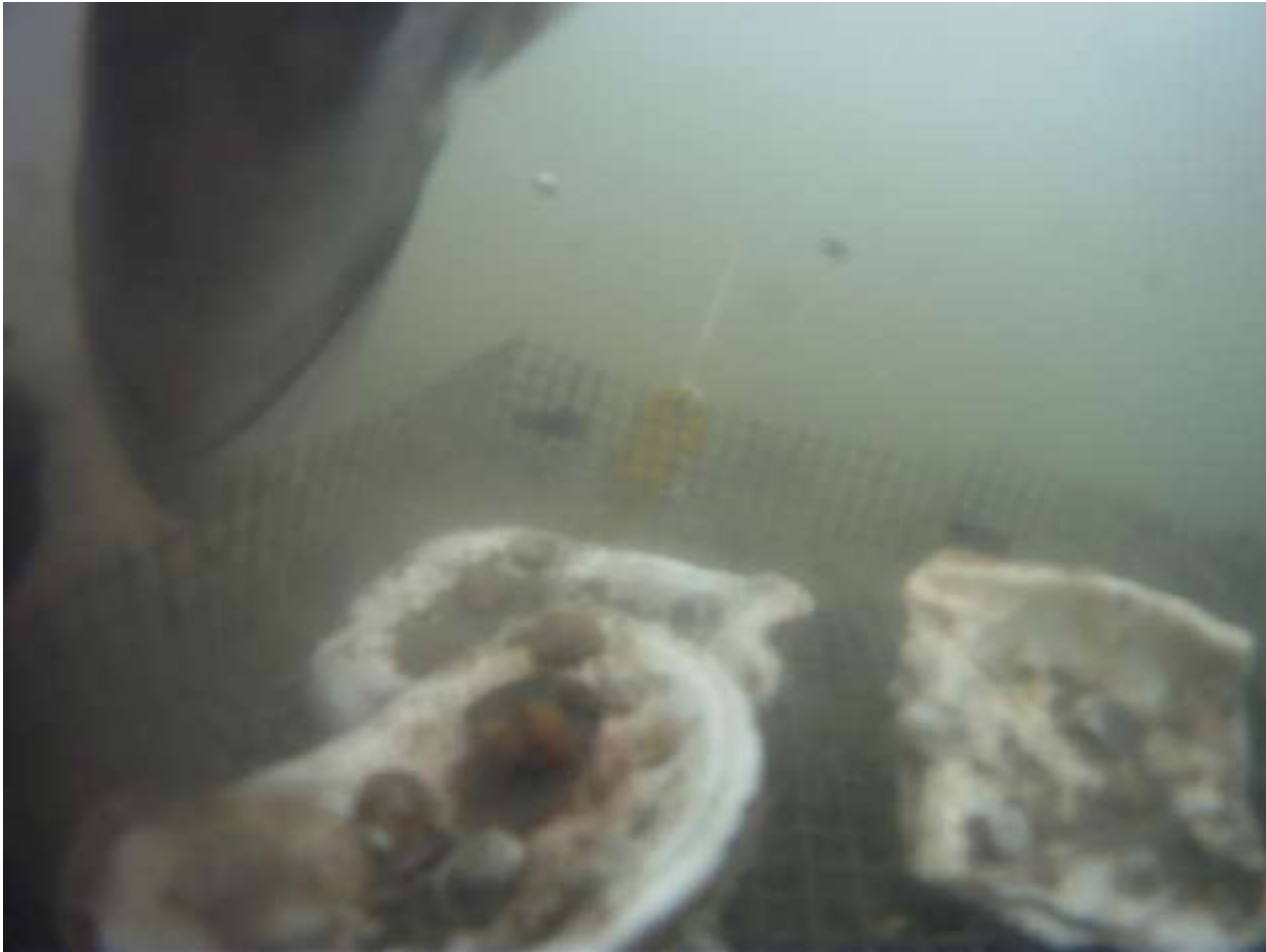
37 Min



50 min



51 Min



52 Min



To think about

- All the methods we use have strength and weaknesses
- Not all methods are applicable in all restoration types (bagged vs loose shell).
- A common set of methods helps with interpretation.

